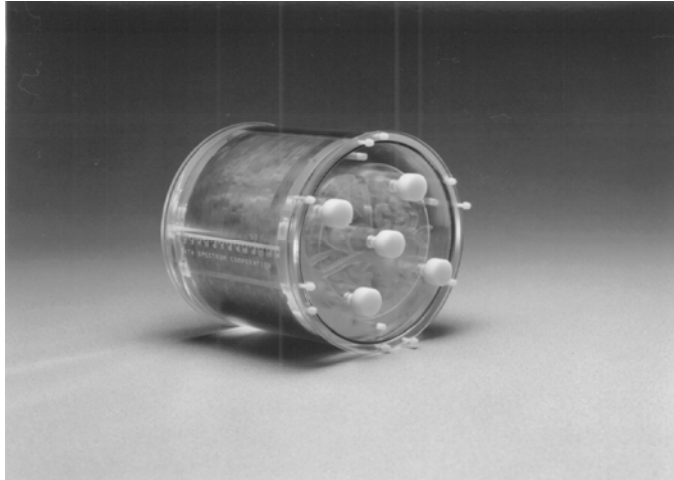


# Hoffman 3-D Brain Phantom™



*Hoffman 3-D Brain Phantom™*

## Hoffman 3-D Brain Phantom™ Model BR/3D/P

### Main Features:

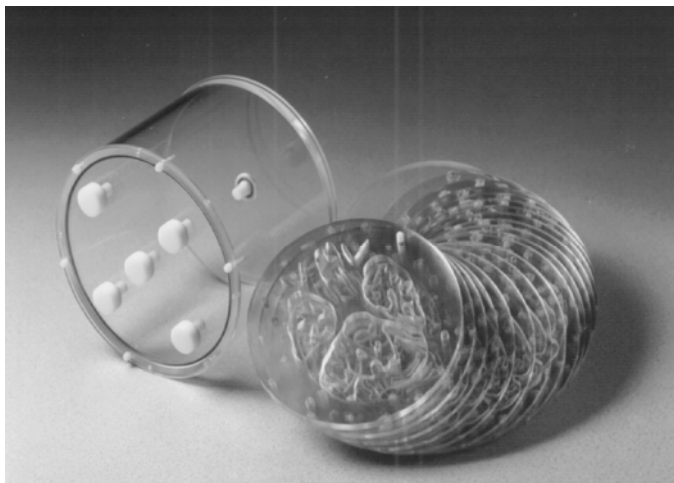
- Anatomically accurate simulation of radioactivity distribution for brain SPECT and brain PET studies\* and distribution of proton density and relaxation parameters for brain MRI studies
- Simulates 4:1 uptake ratio (by partial volume effect) seen for normal gray and white matter in flow and metabolic studies
- Single fillable chamber eliminates the necessity of preparing different concentrations of radioactivity
- Fillable and solid defects for basil ganglia region available

### Main Applications:

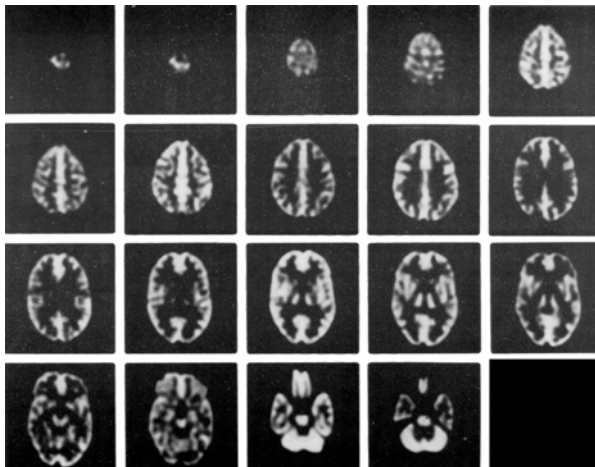
- Evaluation of acquisition and reconstruction methods for brain ECT studies
- Evaluation of 3-D reconstruction methods
- Evaluation of 3-D attenuation and scatter compensation methods
- Evaluation of 3-D SPECT, PET and MRI registration techniques
- Research

### Specifications:

Cylinder inside diameter: 20.8 cm  
Cylinder inside height: 17.5 cm  
Fillable volume: ~ 1.2 liter



*Cylinder and 3-D Brain Insert™*



*SPECT Images*

## 3D Brain Phantom Solid Defects Set (2)

### Model BR/3D-SOL/SET2

- Hot and cold defects can be located in the basil ganglia region
- Allows user to determine image shape of the defect

\* Hoffman EJ, Cutler PD, Digby WM and Mazziotta JC. 3-D phantom to simulate cerebral blood flow and metabolic images for PET, IEEE Trans Nucl Sci 37:616-620, 1990. Mini and Micro Defrise Phantom™