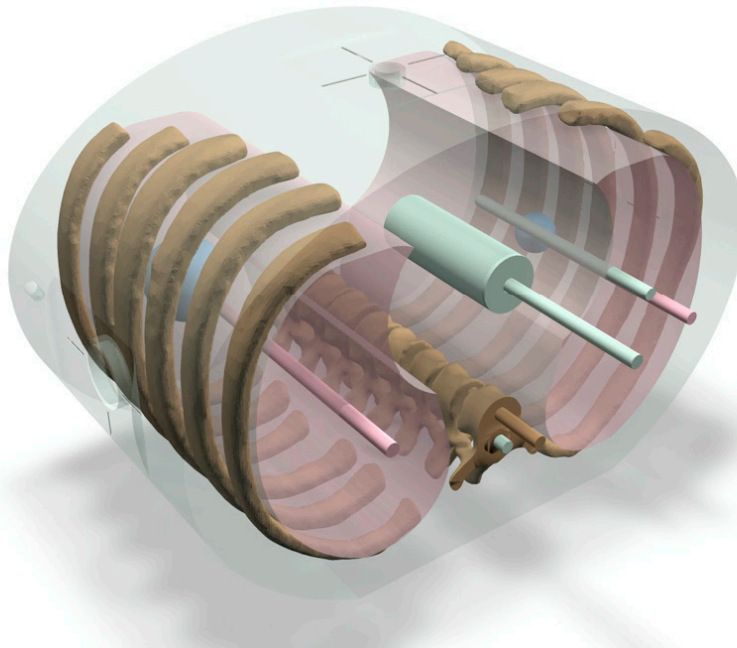


E2E[®] SBRT Phantom

A CIRS and IMT Joint Development Project

Model 036



"END-TO-END" SBRT TESTING SOLUTION

The high dose per fraction associated with SBRT necessitates a high degree of accuracy in target localization and dose delivery. Small errors can result in significant under-treatment of portions of the tumor volume and over-doses of nearby normal tissues. The E2E[®] SBRT Phantom provides a means to check the entire treatment chain during commissioning and routine QA.

The complete Model 036 consists of a thorax body containing highly anthropomorphic internal anatomy including articulated spine, ribs, and lungs. All materials are suitable for use in kV and MV energies. The thorax section of the phantom provides two lung tumor volumes with ionization chamber cavities in the center of each target*. Additional ion chamber cavities are provided in spinal cord, vertebra body and lung/soft tissue interface. The surface of the thorax body is machined with concentric circle targets, point targets and alignment marks for daily system checks.

An abdominal section is also available that can accommodate a data pack with 3D spine anatomy, for film dosimetry or CBCT Image Quality phantom (CIRS Model 062QA-35) and provides extra bolus to allow non-coplanar dose assessments with the thorax.

The SBRT phantom is a single tool for end-to-end localization assessment and dosimetric evaluation for use on both SRS Frame-based and IGRT systems.

Features

- Thorax with articulated spine, ribs and lungs
- Optional Abdomen with Data Pack
- High Resolution Anthropomorphic Characteristics
- Center point fiducial and offset target for daily system checks
- Ideal for commissioning an SBRT program
- Excellent test environment for Monte Carlo dose calculation verification
- Supports use and testing of Image Guidance capabilities
- Facilitates SBRT planning and delivery for Lung, Liver, and Spine treatments

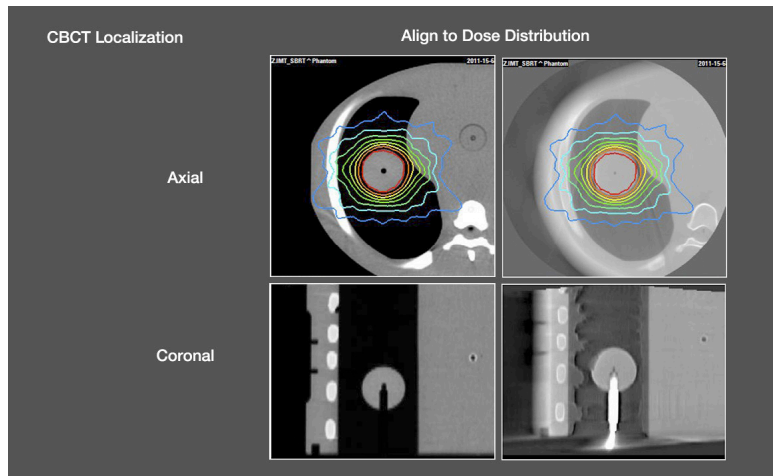
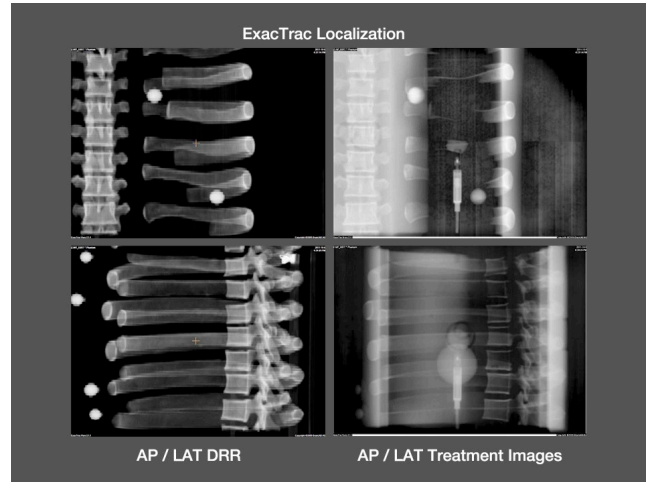
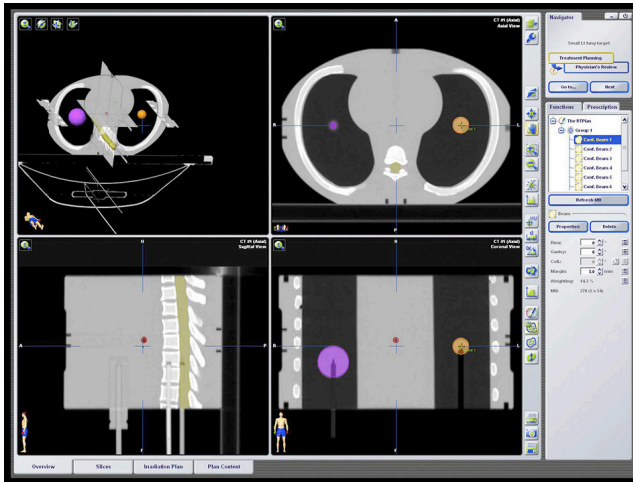
*The Model 036 is drilled standard for PTW 31014 pinpoint ionization chamber. The phantom can be drilled for other small thimble chambers upon request.

2428 Alameda Avenue Suite 316 • Norfolk, Virginia 23513 • USA
Tel: 800.617.1177 • 757.855.2765 • Fax: 757.857.0523

WWW.CIRSINC.COM

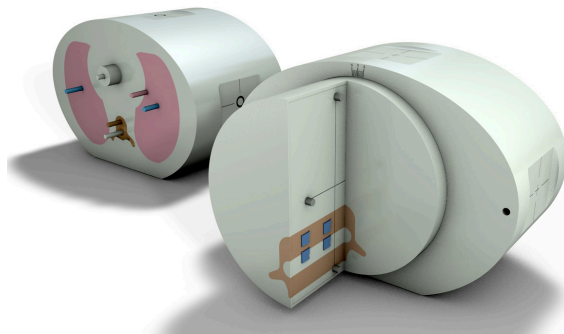
CIRS

Tissue Simulation & Phantom Technology



SPECIFICATIONS

DIMENSIONS:	16.5 cm x 30 cm x 20 cm 6.5" x 11.8" x 7.9"
PHANTOM WEIGHT:	~7 kg (15 lb)
MATERIALS:	Proprietary Epoxy Resins



E2E® SBRT Phantom (036) and Optional Abdomen Insert for Film Dosimetry & 3D Spine (036-01)

MODEL 036 INCLUDES

QTY	COMPONENT DESCRIPTION
1	E2E® SBRT Phantom (Thorax) drilled for PTW 31014 Ion Chamber
1	User Guide
1	Case
-	48 Month Warranty

OPTIONAL ACCESSORIES

PART NO.	COMPONENT DESCRIPTION
036-01	Abdomen Insert for Film Dosimetry & 3D Spine
062QA-35	CBCT Image Quality Phantom

