



## DMAM 2

### MAMMOGRAPHY

Designed in accordance with European guidelines for quality assurance in breast cancer screening and diagnosis (fourth edition) - ISBN 92-79-01258-4

A set of test objects for digital mammography systems, designed to be used quickly and easily on a regular basis to provide an ongoing check of imaging performance, particularly those aspects which are most liable to deterioration. An ongoing record of the results of these checks will reveal any trend towards deterioration in imaging performance.

DMAM consists of the following:

#### **Threshold Contrast Details**

63 contrast details in 6 sizes, dia range from 0.1mm to 2.0mm, contrast range 0.489% to 27.56%

#### **Filaments**

6 groups of multi-directional filaments 0.40mm to 0.20mm diameter

#### **PMMA plates**

Polymethylmethacrylate (PMMA) plates with a dimensional tolerance of  $\pm 0.1$ mm.  
(1pc) 300 x 240 x 20mm (including encapsulated 99.99% Al foil for SNR and CNR)  
(2pc) 300 x 240 x 20mm  
(1pc) 300 x 240 x 10mm  
(1pc) 300 x 240 x 5mm

**Radiopaque mesh** 400 micron (mesh size #40) covering an area 300 x 240mm

**Radiopaque grid** of horizontal, vertical and diagonal lines covering an area 300 x 240mm

**Stainless steel straight edge** accurate to  $\pm 20$  microns. Angled at  $3^\circ$

**Spatial Resolution Test Pattern** 0.5 - 14.3 LP/mm. Angled at  $45^\circ$

**X-ray to Light Field Alignment** Radiopaque Rulers x4, Phosphor Screens x5

**Aluminium filter**  $2.0 \pm 10\%$  mm 99.9%+ purity for homogeneity tests  
EPS spacers to set the compression paddle position.

**1.0mm stainless steel plate** 300 x 240mm, to shield the detector from X rays during measurement of incident air kerma at the entrance surface of PMMA slabs.

For more information or to find your regional distributor please visit our website

[www.leedstestobjects.com](http://www.leedstestobjects.com) | tel. +44(0)1423 321102



# DMAM 2

MAMMOGRAPHY



DMAM2

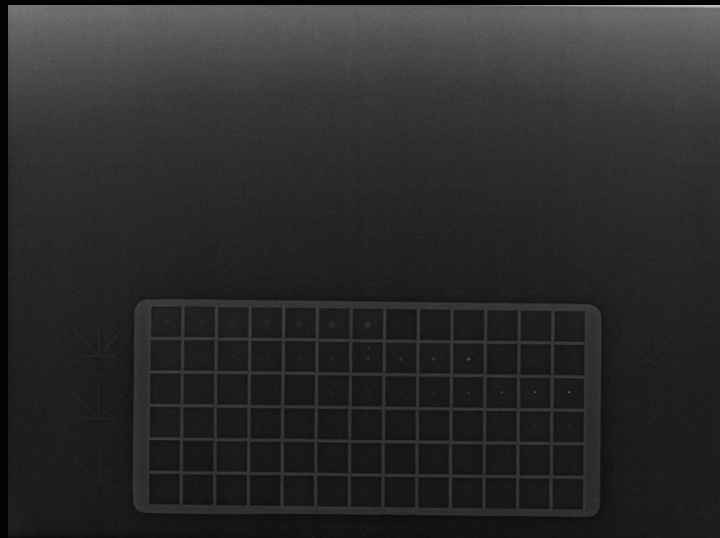
For more information or to find your regional distributor please visit our website

[www.leedstestobjects.com](http://www.leedstestobjects.com) | tel. +44(0)1423 321102



# DMAM 2

MAMMOGRAPHY



THRESHOLD CONTRAST DETAILS X-RAY IMAGE

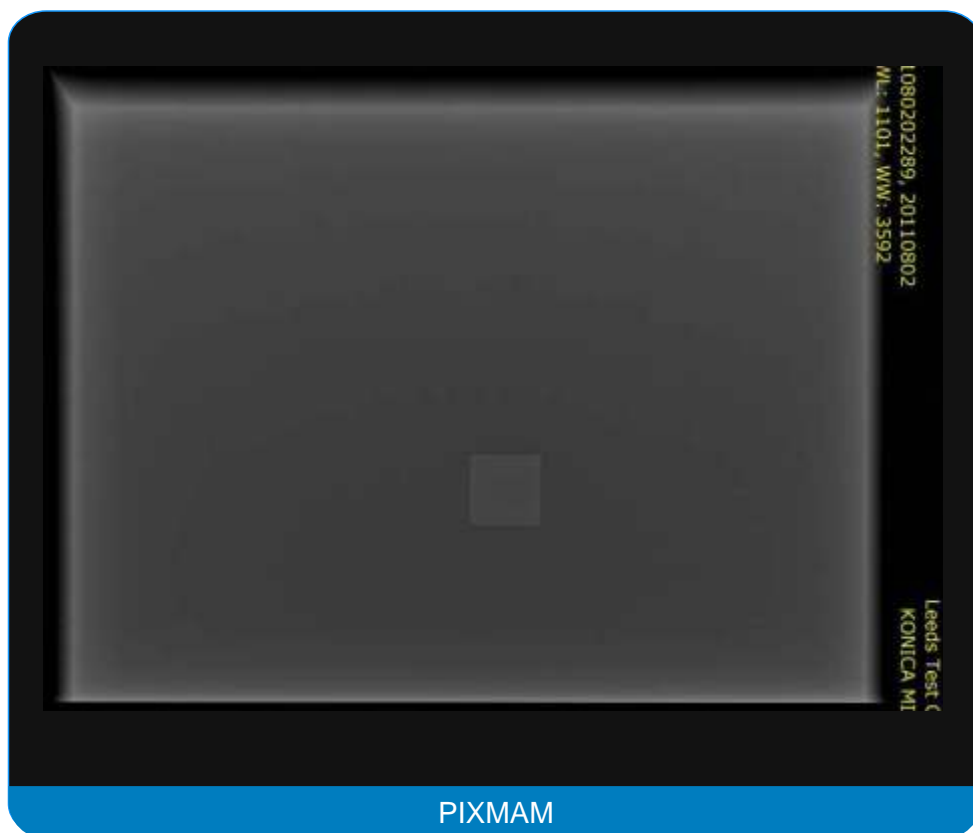
For more information or to find your regional distributor please visit our website

[www.leedstestobjects.com](http://www.leedstestobjects.com) | tel. +44(0)1423 321102



# DMAM 2

MAMMOGRAPHY



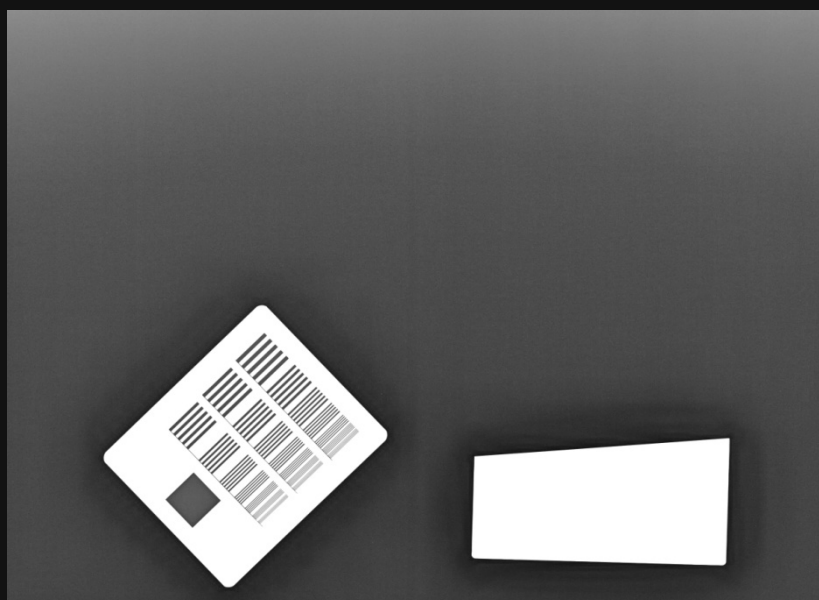
For more information or to find your regional distributor please visit our website

[www.leedstestobjects.com](http://www.leedstestobjects.com) | tel. +44(0)1423 321102



# DMAM 2

MAMMOGRAPHY



MTF X-RAY IMAGE

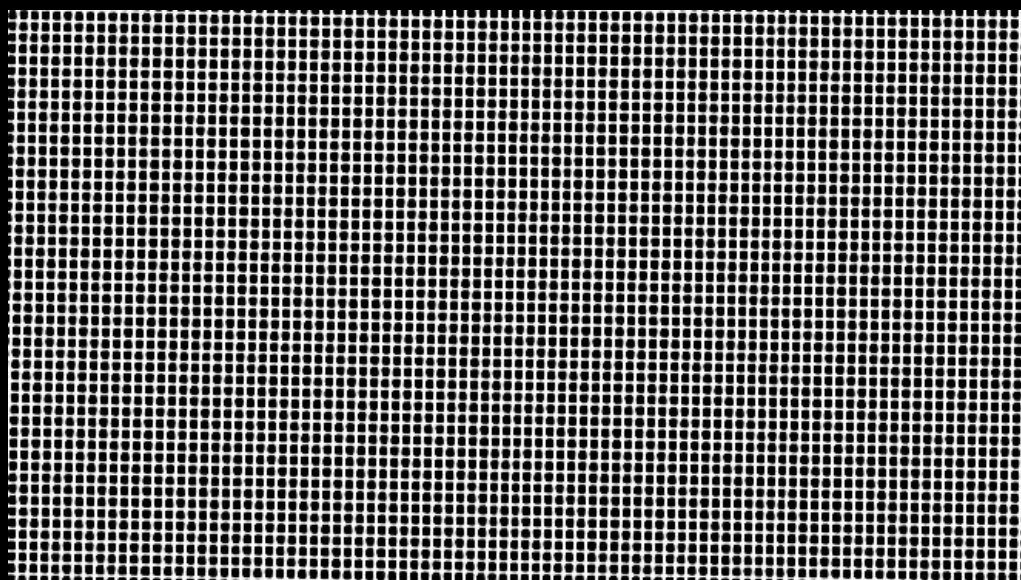
For more information or to find your regional distributor please visit our website

[www.leedstestobjects.com](http://www.leedstestobjects.com) | tel. +44(0)1423 321102



# DMAM 2

MAMMOGRAPHY



ARTEFACT EVALUATION MESH X-RAY IMAGE

For more information or to find your regional distributor please visit our website

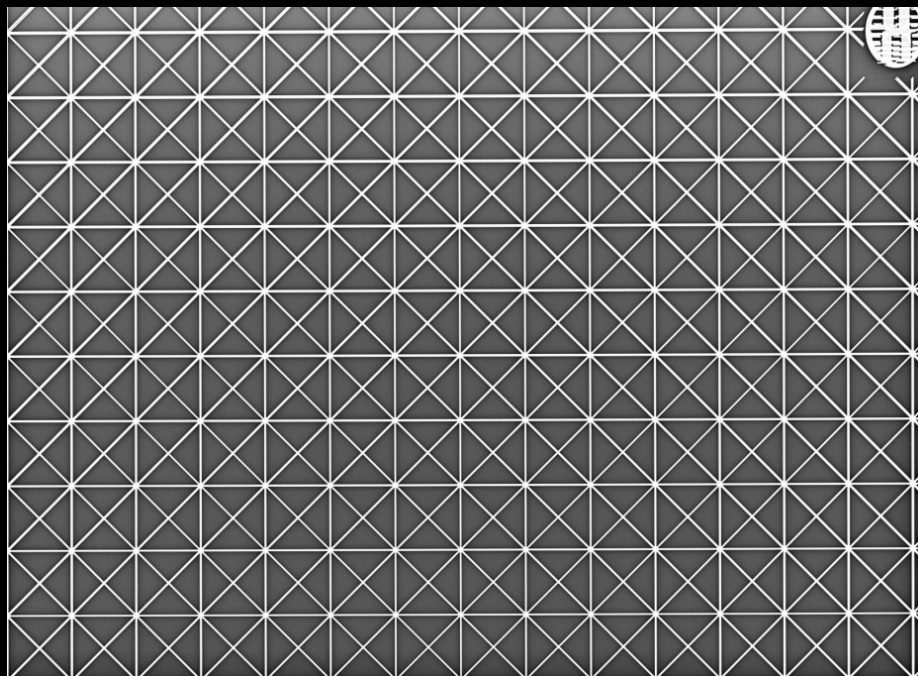
[www.leedstestobjects.com](http://www.leedstestobjects.com) | tel. +44(0)1423 321102





# DMAM 2

MAMMOGRAPHY



GEOMETRIC DISTORTION GRID X-RAY IMAGE

For more information or to find your regional distributor please visit our website

[www.leedstestobjects.com](http://www.leedstestobjects.com) | tel. +44(0)1423 321102

Copyright © 2011 Leeds Test Objects Ltd | SpecSh 164b 16/02/2012